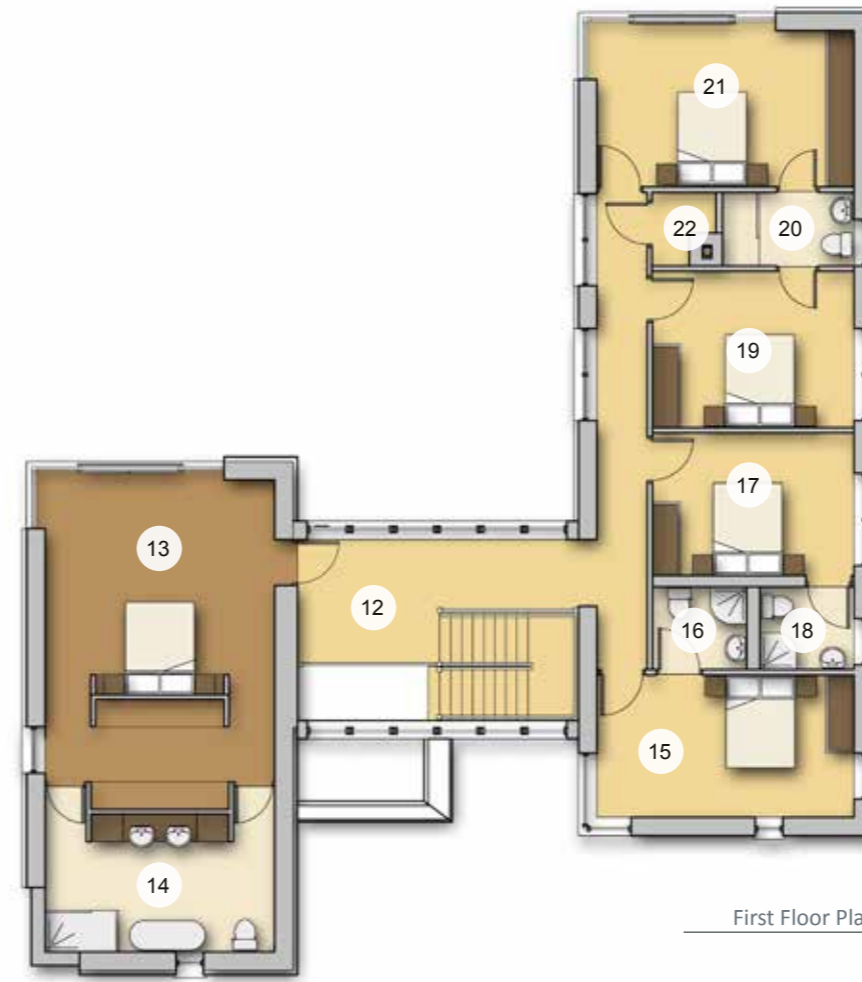




Ground Floor Plan



First Floor Plan



The 'Kildare'



The Island at Temple Wood Sites 22, 27, 28 & 29

Gross Internal Floor Areas	
Name	Area
Ground Floor	180m ²
First Floor	162m ²
Total	342m ²

Ground Floor		
No.	Name	Area
1	Lobby	4.4m ²
2	Hallway	29.6m ²
3	Kitchen	30.1m ²
4	Dining	22.8m ²
5	Lounge	32.0m ²
6	Utility	5.6m ²
7	Plant	5.0m ²
8	Cloaks	0.85m ²
9	WC	3.8m ²
10	Playroom	19.6m ²
11	Study	22.9m ²

First Floor		
No.	Name	Area
12	Landing / Hallway	24.7m ²
13	Master Bedroom	34.6m ²
14	Ensuite	15.9m ²
15	Bedroom 1	17.3m ²
16	Ensuite	3.6m ²
17	Bedroom 2	13.5m ²
18	Ensuite	3.6m ²
19	Bedroom 3	14.9m ²
20	Shared Ensuite	4.5m ²
21	Bedroom 4	19m ²
22	Linen Store	1.8m ²



CARTON HOUSE

The Island at Temple Wood
House Plans - The 'Kildare'

[House Type E-2R]

Demesne Architects
Desmond House, Main Street,
Maynooth, Co. Kildare
T: +353 (0)1 610 6900
E: info@demesne-architects.com
Web: www.demesne-architects





Ground Floor Plan



First Floor Plan



The 'Talbot'




The Island at Temple Wood Sites 24, 25 & 31

Gross Internal Floor Areas	
Name	Area
Ground Floor	180m ²
First Floor	162m ²
Total	342m ²

Ground Floor		
No.	Name	Area
1	Lobby	4.4m ²
2	Hallway	28.4m ²
3	Kitchen	30.1m ²
4	Dining	22.8m ²
5	Lounge	32.0m ²
6	Utility	5.6m ²
7	Plant	5.0m ²
8	Cloaks	0.83m ²
9	WC	2.7m ²
10	Playroom	29.5m ²
11	Study	15.5m ²

First Floor		
No.	Name	Area
12	Landing / Hallway	24.7m ²
13	Master Bedroom	35.5m ²
14	Ensuite	16.4m ²
15	Bedroom 1	17.3m ²
16	Ensuite	3.6m ²
17	Bedroom 2	13.5m ²
18	Ensuite	3.6m ²
19	Bedroom 3	14.9m ²
20	Shared Ensuite	4.5m ²
21	Bedroom 4	19m ²
22	Linen Store	1.8m ²



CARTON HOUSE

The Island at Temple Wood
House Plans - The 'Talbot'
[House Type E-1R]

Demesne Architects
Desmond House, Main Street,
Maynooth, Co. Kildare
T: +353 (0)1 610 6900
E: info@demesne-architects.com
Web: www.demesne-architects





Ground Floor Plan



First Floor Plan



The 'Talbot' (Stepped)




The Island at Temple Wood Site 26

Gross Internal Floor Areas	
Name	Area
Ground Floor	180m ²
First Floor	162m ²
Total	342m ²

Ground Floor		
No.	Name	Area
1	Lobby	4.4m ²
2	Hallway	28.4m ²
3	Kitchen	30.1m ²
4	Dining	22.8m ²
5	Lounge	32.0m ²
6	Utility	5.6m ²
7	Plant	5.0m ²
8	Cloaks	0.83m ²
9	WC	2.7m ²
10	Playroom	29.5m ²
11	Study	15.5m ²


First Floor		
No.	Name	Area
12	Landing / Hallway	24.7m ²
13	Master Bedroom	35.5m ²
14	Ensuite	16.4m ²
15	Bedroom 1	17.3m ²
16	Ensuite	3.6m ²
17	Bedroom 2	13.5m ²
18	Ensuite	3.6m ²
19	Bedroom 3	14.9m ²
20	Shared Ensuite	4.5m ²
21	Bedroom 4	19m ²
22	Linen Store	1.8m ²



CARTON HOUSE

The Island at Temple Wood
House Plans - The 'Talbot' (Stepped)
[House Type E-1RS]

Demesne Architects
Desmond House, Main Street,
Maynooth, Co. Kildare
T: +353 (0)1 610 6900
E: info@demesne-architects.com
Web: www.demesne-architects





Ground Floor Plan



First Floor Plan



The 'Talbot' (Handed)



The Island at Temple Wood Sites 30 & 32

Gross Internal Floor Areas	
Name	Area
Ground Floor	180m ²
First Floor	162m ²
Total	342m ²

Ground Floor		
No.	Name	Area
1	Lobby	4.4m ²
2	Hallway	28.4m ²
3	Kitchen	30.1m ²
4	Dining	22.8m ²
5	Lounge	32.0m ²
6	Utility	5.6m ²
7	Plant	5.0m ²
8	Cloaks	0.83m ²
9	WC	2.7m ²
10	Playroom	29.5m ²
11	Study	15.5m ²

First Floor		
No.	Name	Area
12	Landing / Hallway	24.7m ²
13	Master Bedroom	35.5m ²
14	Ensuite	16.4m ²
15	Bedroom 1	17.3m ²
16	Ensuite	3.6m ²
17	Bedroom 2	13.5m ²
18	Ensuite	3.6m ²
19	Bedroom 3	14.9m ²
20	Shared Ensuite	4.5m ²
21	Bedroom 4	19m ²
22	Linen Store	1.8m ²



CARTON HOUSE

The Island at Temple Wood
House Plans - The 'Talbot' (Handed)

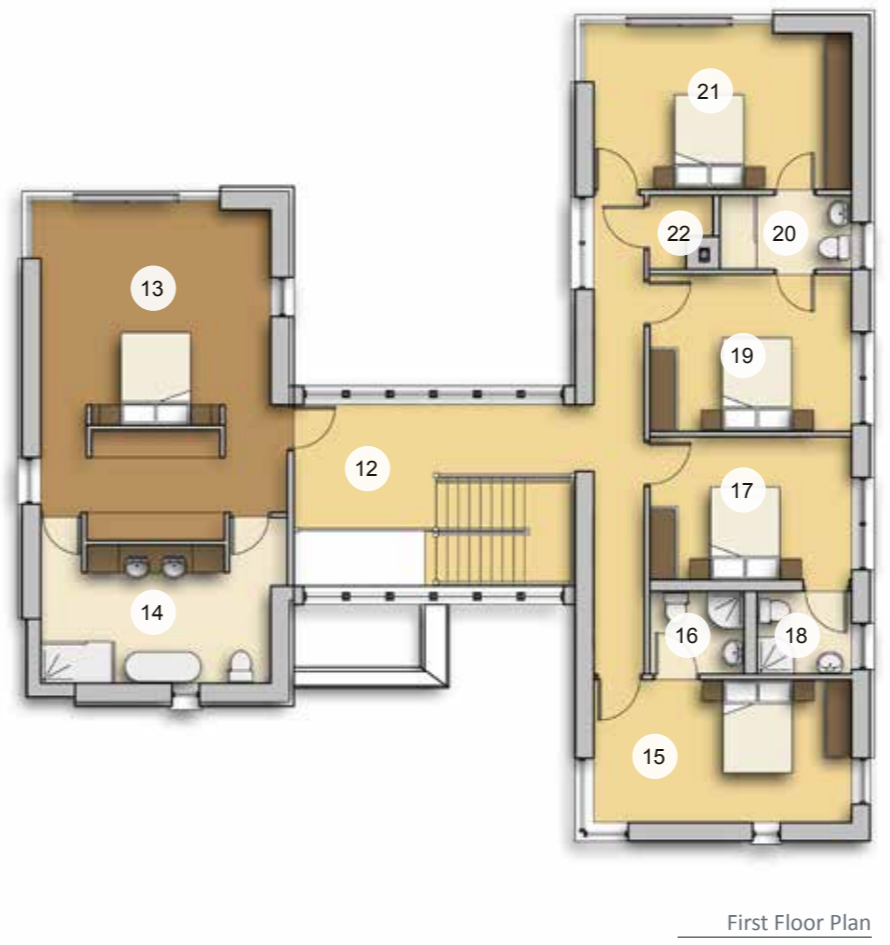
[House Type E-1L]

Demesne Architects
Desmond House, Main Street,
Maynooth, Co. Kildare
T: +353 (0)1 610 6900
E: info@demesne-architects.com
Web: www.demesne-architects





Ground Floor Plan



First Floor Plan



The 'William'



The Island at Temple Wood Site 23

Gross Internal Floor Areas	
Name	Area
Ground Floor	180m ²
First Floor	162m ²
Total	342m ²

Ground Floor		
No.	Name	Area
1	Lobby	4.4m ²
2	Hallway	28.4m ²
3	Kitchen	30.1m ²
4	Dining	22.8m ²
5	Lounge	32.0m ²
6	Utility	5.6m ²
7	Plant	5.0m ²
8	Cloaks	0.83m ²
9	WC	2.7m ²
10	Playroom	29.5m ²
11	Study	15.5m ²

First Floor		
No.	Name	Area
12	Landing / Hallway	24.7m ²
13	Master Bedroom	35.5m ²
14	Ensuite	16.4m ²
15	Bedroom 1	17.3m ²
16	Ensuite	3.6m ²
17	Bedroom 2	13.5m ²
18	Ensuite	3.6m ²
19	Bedroom 3	14.9m ²
20	Shared Ensuite	4.5m ²
21	Bedroom 4	19m ²
22	Linen Store	1.8m ²



CARTON HOUSE

The Island at Temple Wood
House Plans - The 'William'
[House Type E-3R]

Demesne Architects
Desmond House, Main Street,
Maynooth, Co. Kildare
T: +353 (0)1 610 6900
E: info@demesne-architects.com
Web: www.demesne-architects

